

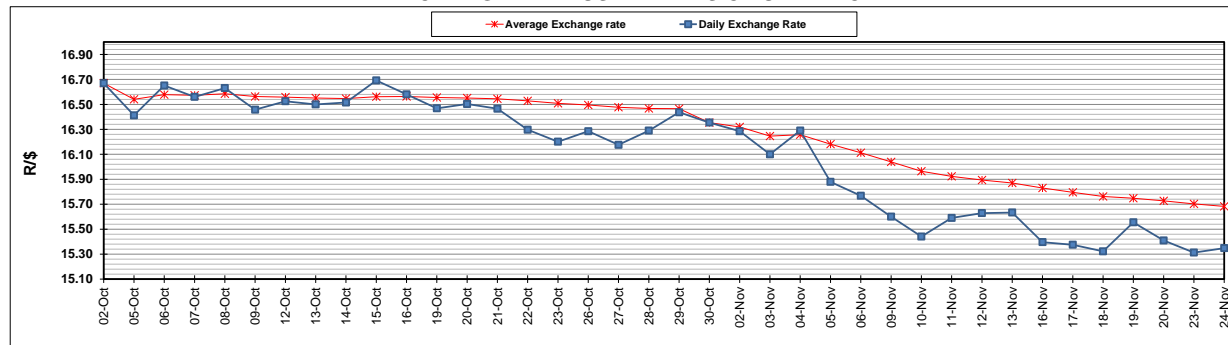
	PETROL 95 ULP	PETROL 93 ULP & LRP	DIESEL 0.05%	DIESEL 0.005%	ILL. PAR.
GAUTENG PUMP PRICE (SA c/l) AS FROM 04/11/2020	1,459.000	1,439.000	-	-	-
WHOLESALE PRICE (SA c/l) AS FROM 04/11/2020	-	-	1,225.560	1,227.960	655.828
SINGLE NATIONAL MAXIMUM RETAIL PRICE	-	-	-	-	818.000
BASIC FUEL PRICE - 24/11/2020 (SA c/l)	508.499	501.275	527.678	529.101	505.099
PRESS RELEASE CONTRIBUTION TO BFP 04/11/2020 - 24/11/2020 (SA c/l)	506.470	496.470	474.630	477.030	451.128
UNIT OVER/(UNDER) RECOVERY - 24/11/2020 (SA c/l)	(2.029)	(4.805)	(53.048)	(52.071)	(53.971)
AVERAGE BASIC FUEL PRICE 30/10/2020 - 24/11/2020	480.892	472.984	484.390	486.484	466.257
AVERAGE UNIT OVER/(UNDER) RECOVERY 30/10/2020 - 24/11/2020	30.079	27.986	(7.760)	(7.621)	(17.629)

### ANALYSIS MOVEMENT OF AVERAGE OVER/(UNDER) RECOVERY

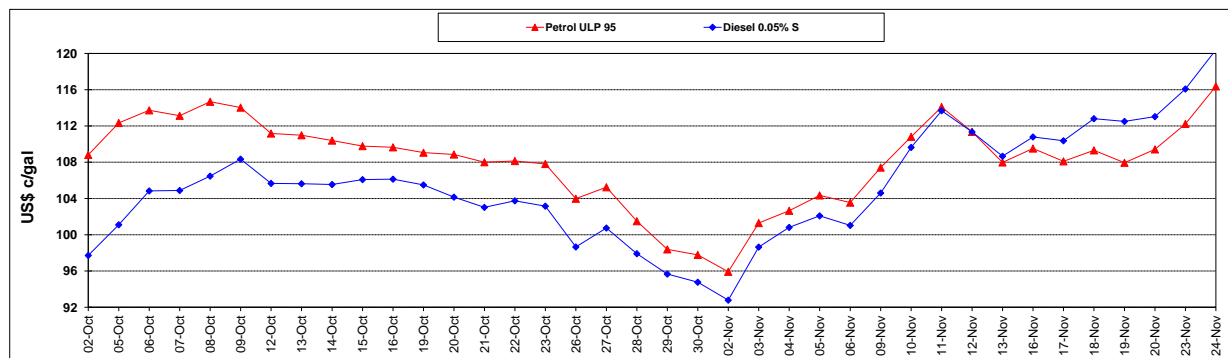
	PETROL 95	PETROL 93	DIESEL 0.05%	DIESEL 0.005%	ILL. PAR.
- MOVEMENT IN INTERNATIONAL PRODUCT PRICES	6.068	4.371	(31.944)	(31.910)	(40.908)
- MOVEMENT IN EXCHANGE RATE	24.010	23.615	24.184	24.289	23.279
AVERAGE UNIT OVER/(UNDER) RECOVERY 30/10/2020 - 24/11/2020	30.079	27.986	(7.760)	(7.621)	(17.629)

### R/\$ EXCHANGE RATE - (R/\$15.3483 - 24/11/2020)

#### EXCHANGE RATE USED IN BASIC FUEL PRICE



#### INTERNATIONAL PRODUCT PRICES OF BASKET USED IN BASIC FUEL PRICE



#### BASIC FUEL PRICE IN SA CENTS PER LITRE

